

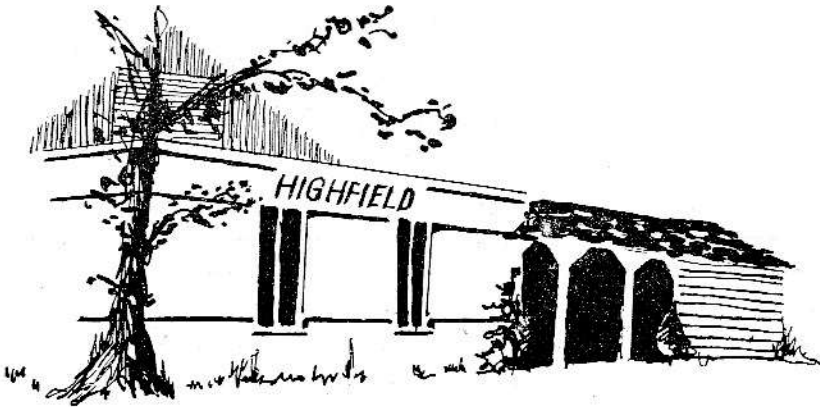
OBERLIN COLLEGE

GILBERT & SULLIVAN

PLAYERS

at

HIGHFIELD



FESTIVAL

of

LIGHT OPERA

EIGHT WEEKS—July 14 - September 5, 1959

SEVENTH CONSECUTIVE SEASON ON CAPE COD

OBERLIN COLLEGE
GILBERT & SULLIVAN
PLAYERS

at

HIGHFIELD

present

“La Belle Helene”

Words by

Mm. Henri Meilhac and Ludovic Halevy

Translated by

W. Hayden Boyers

Music by

Jacques Offenbach

Producer

W. HAYDEN BOYERS

Musical Director
ROBERT B. KREIS

Stage Director
JAMES ELLIS

HIGHFIELD THEATRE
Falmouth, Massachusetts

August 4 - August 8, 1959

WESTERN AUTO

ASSOCIATE STORE

Auto Supplies & Accessories

Beach and Picnic Supplies

149 Main St.

Falmouth

ORCHESTRA

First Violin: Alan Lubin, Concertmaster; Peter Zaret, Eric Kurtz, Robert Huenemann. *Second Violin:* Carolyn Stoakes, Principal; Roberta Buckingham, Gretchen Schoenbohm. *Viola:* Warren Laffredo, Brenton Crane. *Cello:* Delores Plum, Barbara Harrington. *Bass:* Nicholas Romanelli. *Flute:* Martha Duvall, Rachel Turrittin. *Oboe:* Dr. Hugh Burkhardt. *Clarinet:* Larey McDaniel, Konrad Owens. *Bassoon:* Jean Cornell, Diana Burkhardt. *French Horn:* Ann Forester. *Trumpet:* Robert Weber. *Trombone:* Henry Schmidt. *Percussion:* Bruce Lenno.

CHORUS

CHORUS OF SPARTAN MAIDENS AND WARRIORS: Sally Cole, Connie Griffith, Betsy Howe, Judy Kurz, Susan Quinn, Peggy Taylor, Carole Taynton, Jean Taynton, Mandy Whalen, Marilyn Whitney, Brenda Yule, Peter Fenton, Richard Firmin, Jan Moerel, Robert Shephard, Tom Tibbetts.

USHERS AND USHERETTES

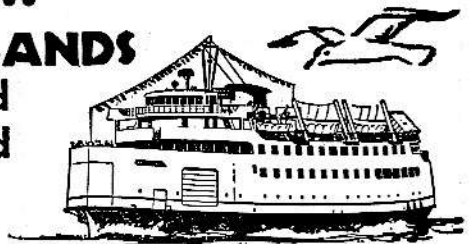
Beverly Ball, Brenda Bennett, Eric Bentina, Patricia Couto, Stephen Ellis, Susan Gordon, John Hough, Carol Jacoby, Diane Lamothe, Ellen Langenheim, Mike Lesh, Jean McGilvary, Betsy Mullen, Ellen Proser, Loring Prosser, David Reardon, Carol Rose, Carol Shea, Sandra Struth, Pearl Struth, Ellen Thompson, Susan Thompson, Mike Ward, Ralph Young.

CRUISE TO THE ISLANDS

Nantucket and Martha's Vineyard

Special low-cost one day excursions, 7 days a week. Special 2 and 3 day excursions, Monday to Friday.

Steamers sail daily from WOODS HOLE at 9:25 a.m. and 11:15 a.m. and from New Bedford at 9:30 a.m. Also frequent ferry service to Martha's Vineyard.



For information
phone in Woods Hole
Kimball 8-0710

STEAMSHIP AUTHORITY, In New Bedford — WYman 6-8571
PIER 9, NEW BEDFORD

EXECUTIVE BOARD

W. Hayden Boyers, Chairman; Charles Isackes, Peter Jaynes, Robert Kreis, Siegfried Schoenbohm, D. Thomas Tull.

PRODUCTION STAFF

Producer	W. HAYDEN BOYERS
Assistant to Producer	WILLIAM GRISWOLD
Treasurer	MR. CHARLES ISACKES
Business Manager	PETER JAYNES
Musical Director	ROBERT KREIS
Associate Conductor	BRUCE LENNO
Chorus Master	RAYMOND DONNELL
Choral Assistant	RICHARD WINTER
Stage Directors	} SIEGFRIED SCHOENBOHM
	JAMES ELLIS
Choreographer	KATHY COOK
Set Designer	CRAIG HODGETTS
Lighting Designer	JAN MOEREL
Makeup Designer	ELIZABETH MINOT
Publicity Director	MICHAEL LIPSKY
Boston Representative	BARBARA BLANK
Cambridge Representative	MARTY WELSH
Tickets	MRS. W. HAYDEN BOYERS
Stage Manager	SMITH BRITTINGHAM
Costumes	CLARA BOGGS, CAROL TRACY
House Electrician	MICHAEL ROSEN
Stage Crew	CAROLYN BOND, BENJAMIN GREENEBAUM
	PETER JAYNES
Set Painter	SARAH WEEKS
Work Coordinator	DOROTHY LANGER
Dietician	MRS. RUTH BUFORD

**OBERLIN INN
AND MOTEL**
**IN
OBERLIN
OHIO**

— When you're motoring—from West to East or East
to West . . . it makes a delightful stop-over



another
"Educator"

cracker
sensation

MEGOWEN EDUCATOR FOOD COMPANY, LOWELL, MASS.
BAKERS OF CRAX

The Gray Shop

OF BOSTON

SHOWING A COMPLETE
COLLECTION OF EXCITING
CLOTHES IN OUR

Falmouth Shop

Daytime - Cocktail - Sport

418 BOYLSTON STREET
BOSTON

MANJA TRITSCH

QUEENS BUYWAY
FALMOUTH

CAST FOR "LA BELLE HELENE"

PARIS, son of King Priam	Shelby Bale
MENELAUS, King of Sparta	John Patterson
AGAMEMNON, King of Kings	John Crowe
CALCHAS, Grand Augur of Jupiter	D. Thomas Tull
ACHILLES, King of Phliotide	Frank Mifkovic
AJAX MAJOR, King of Salamine	James Ellis
AJAX MINOR, King of Locriens	Winston Gould
HELEN, Queen of Sparta	Helene Joseph
ORESTES, son of Agamemnon	Louise Reade
BACCHIS, attendant to Helen	Gwendolyn Sims
LEONA, a lady of the court	Beth Stokes
PARTHEONIS, a lady of the court	Lynne Wood
PHILOCOMES, attendant to Calchas	William Kloss
EUTHYCLES, a blacksmith	Robert Lamb

SYNOPSIS OF SCENES

ACT I

Sparta, before the Temple of Jupiter.

INTERMISSION

ACT II

Sparta, a room in the Queen's suite.

ACT III

Nauplia, a Greek seaside resort.



The Falmouth National Bank

Falmouth, Mass.

By the Village Green since 1821

Cape Cod's Oldest Bank

Branch Offices—Woods Hole - East Falmouth
Otis Air Force Base

Member Federal Deposit Insurance Corp.

All deposits insured up to \$10,000

Landfall
Woods Hole
Massachusetts

WATERFRONT DINING
Directly on Woods Hole Harbor
STEAKS - SHORE DINNERS
COCKTAILS

Noon to 1 a.m.
Tel. KImball 8-1758

Save Cash on Food
Get Top Value Stamps, Too



Route 28 Falmouth Heights

MEET THE CAST

W. HAYDEN BOYERS, producer of the Players at Highfield and Professor of Romance Languages and Literature at Oberlin College has been faculty head of this organization since its inception. Responsible for bringing the Players to the Cape, Professor Boyers possesses a profound knowledge of the subtleties and beauty that are necessary for the successful presentation of light opera. His experience and appreciation stem from many years work with young college performers.

ROBERT KREIS, in his third year as Musical Director and fourth with the summer Players, needs little introduction to our audiences. He graduated from Oberlin, '58, with honors, and conducted in 1958-59 in contest the New Jersey Symphony and other groups. Among many other activities this year, Bob was guest of Sir John Barbirolli for three weeks at the New York Philharmonic, and was assistant to Franz Allers on the CBS-TV spectacular "Meet Me in St. Louis." His "Suite on Welsh Airs" will be performed by the orchestra this season.

SIEGFRIED SCHOENBOHM assumes the major director chores in his second Cape season. He directed four productions for the Players this winter: "Trial By

Jury," "Ruddigore," "Gondoliers," and "Beggar's Opera." He is co-author with John Patterson of an original play, "Cry, Children, Cry," which was produced at Oberlin. A resident of Rock Island, Ill., he eventually hopes to direct opera.

JAMES ELLIS, in his fourth summer with the Players, returns after a two-year absence to again portray comic leads for which he is popular. In addition, he will direct two shows: "La Belle Helene," and "Mikado." He graduated from Oberlin with honors in 1957, where he acted, directed, and served as Chairman of the G & S board. He is currently doing graduate work in theatre at the University of Iowa. While there he played lead roles in Stravinsky's "L'Histoire du Soldat," and Pirandello's "Six Characters in Search of an Author."

RAYMOND DONNELL, in his second Cape season, is again Chorus Master of the group. He graduated from Oberlin in 1953 and received his M.A. in music history there in 1954. Ray, a Californian, plays piano, organ, and cello, and has been a choral conductor. This winter he was Music Director of the production of "Beggar's Opera." He has written music reviews for the Oberlin Review, and program notes for record jackets.

The Andover Shop

GENTLEMEN'S CLOTHING
LADIES SPORTSWEAR

18 Queens Buyway Falmouth
590 Main St. Hyannis

Palm Beach - Orleans
Ft. Lauderdale - Osterville

BILL PERRY'S

Main Road
West Falmouth, Mass.

TELEVISION - APPLIANCES

SALES - SERVICE

Phone KImball 8-2605
For Service

G. Campbell Lawrence

Warren E. White

Real Estate & Insurance

131 Main St., Falmouth

Phone KImball 8-1596 and 8-2740

Eastman's Hardware

- Kyanize Paints
- Kitchen Furnishings
- Eureka Vacuum Cleaners
- Fishing Tackle and
- Sporting Goods
- Bicycles

Main St.

Falmouth

KI 8-0407

MEET THE CAST (cont.)

JOHN CROWE, a Cape veteran of three summers, apprenticed for one year with the Cleveland Playhouse, and has appeared with the Goodyear Musical Theatre, and the Westinghouse Theatre in Akron, Ohio. At present he is a voice major at Akron University, where he is working toward a Masters degree in music. John, who studied for one year at Oberlin, is the recipient of a five hundred dollar voice scholarship for next year. He plans a career on the stage.

WINSTON GOULD made an impressive debut in his first year at Oberlin by capturing the major bass leads of Sir Roderic in "Ruddigore," and Don Alhambra, the Grand Inquisitor in "Gondoliers." Winnie, a resident of Norwood, Ohio, was awarded the Baker scholarship, a four-year, full tuition grant. He is a varsity football player.

HELENE JOSEPH is one of the talented freshmen who are bolstering the Players' ranks this season. Among her Oberlin triumphs this winter was her outstanding performance of Susanna in a production of the second act of Mozart's "The Marriage of Figaro." Her abilities were further emphasized when on a day's notice she

stepped in to sing Casilda in "Gondoliers" from the pit. Helenē, who aspires to the Opera stage, apprenticed for one year at the Hedgerow Theatre, near her home in Chester, Pa.

JOHN PATTERSON, the Players' leading tenor, is in his second Cape season. He has sung lead roles at Oberlin for two years now, including Cyril in "Princess Ida," Richard Dauntless in "Ruddigore," Marco in "Gondoliers," and "that barbarous villian Macheath" in "Beggars Opera." John, who hails from Ithaca, New York, is entering his senior year as a government major. He is an accomplished guitarist and balladeer.

LOUISE READE might qualify as the most-travelled member of the company. She has lived in Los Angeles, Heidelberg, Washington, D. C., and Hong Kong. Another of the Players' talented freshmen, she has assumed a large share of the soprano leads in her first Cape season. At Oberlin she sang the part of Gianetta in "Gondoliers." Louise, who plans a singing career, is treasurer of the Oberlin Association of Women Students.

(Continued on page 14)

See our delightful
collection designed
to do so much
for you
all unmistakably

Sara Fredericks

FALMOUTH
77 NEWBURY STREET, BOSTON
PALM BEACH

MEET THE CAST (cont.)

(Continued from page 13)

GWENDOLYN SIMS is a freshman in her first summer with the Players. Her previous experience, which includes such different roles as Aida in a concert version of "Aida," and Katisha in "The Mikado," both played in high school, indicates the extent of her vocal powers. This winter she appeared in an Opera Lab presentation of "Gianni Schicchi." She has also been a member of the Metropolitan Opera Guild Chorus of North Jersey and of the New Jersey All-State Chorus. She is a resident of Princeton, N. J.

D. THOMAS TULL first appeared with the players when still in Prep School in 1953 as a chorus member when the company was located in Mashpee for its first season. It was inevitable that his interest in Gilbert and Sullivan should continue. In the past two years he has developed into a lead in many of the Players productions on the Cape.

SHELBY BALE joins the Players' ranks for three weeks during which he will portray tenor leads. He brings to the job much experience, having sung tenor leads with the Players for two summers, and important roles at Oberlin, where he graduated in 1958. For the past year, Shelby, who comes from Elizabethtown, Ky., has taught government and history at a private boys' school in Salt Lake City, Utah.

CRAIG HODGETTS, set designer, was introduced to theater last summer when he played trumpet and was technical director for the Players. Since then he has designed sets for "Gondoliers," "Trial By Jury," "The Marriage of Figaro," and produced and designed a Theater Workshop production of "Aria da Capo," a group which he helped organize. He is proudest of his unit set for a production of "Measure for Measure," which was further developed in this season's "The Gypsy Baron."

The Sandwich Women's Club benefit will be the Friday, August 28, performance of "The Gondoliers," not "The Mikado" as erroneously stated on page 20.

TEN ACRE

The S. S. PIERCE Store
in Falmouth

* * *

We believe in fresh meat cut to order—fresh Native Vegetables.

We feature freshly cut meats. Prime Beef and Native Fresh Poultry our specialties.

This is an old fashioned store.

* * *

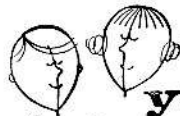
Deliveries to all parts
Falmouth—Woods Hole—Cataumet
and Buzzards Bay.

New Large Parking Area
in Rear.
Open Evenings
Ten Acre - Falmouth

deauville shop

Casual
and Sport
Clothes

SEE . . . our



young
islanders

Children's Shop

Infants thru Subteen
89 Palmer Ave., Falmouth
Fort Lauderdale, Florida