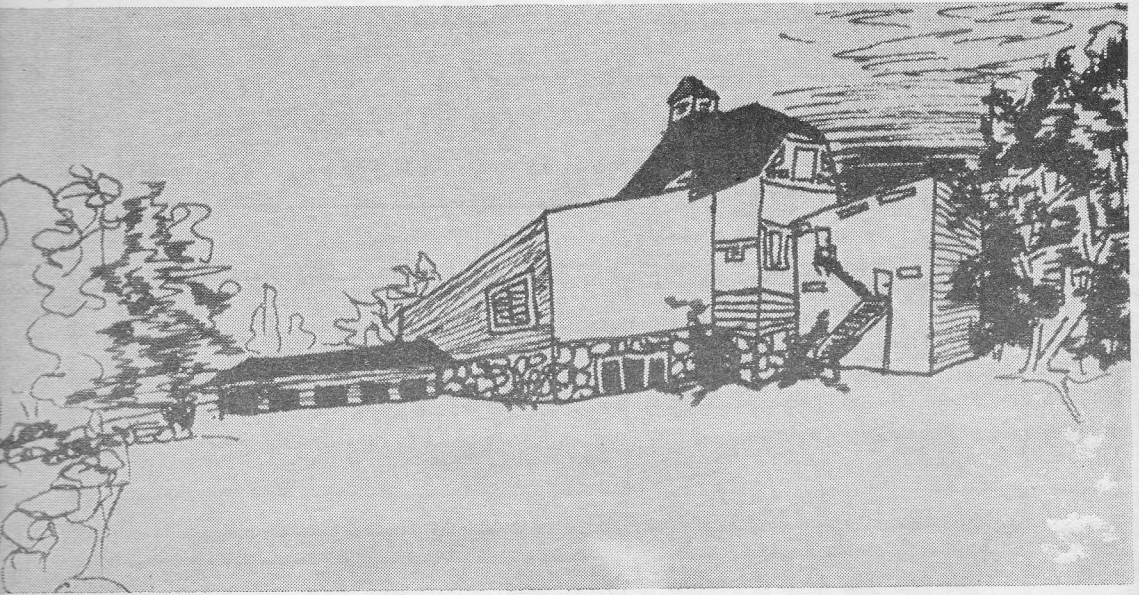


OBERLIN COLLEGE

GILBERT & SULLIVAN PLAYERS
HIGHFIELD THEATER



“Hansel and Gretel”

August 5 - August 9 - 1958

OBERLIN COLLEGE
GILBERT and SULLIVAN PLAYERS

at

HIGHFIELD THEATER

present

“Hansel and Gretel”

by

ENGELBERT HUMPERDINCK

Stage Director

TOM Z. SHEPARD

Producer

W. HAYDEN BOYERS

Musical Director

ROBERT B. KREIS

HIGHFIELD THEATER

Falmouth, Massachusetts

August 5 - August 9 - 1958

ALFRED SOARES**PLUMBING & HEATING**

KI 8-2047

Falmouth

ORCHESTRA

First Violin: Alan Lubin, Concertmaster; Jane Hannauer, Brenton Crane. *Second Violin:* Roberta Buckingham, Mary Evoy, Harry Shaefer. *Viola:* Kitty Gerson. *Cello:* Richard Serbagi. *Bass:* Kenneth Ross. *Flute:* Sally Grove, Martha Duvall. *Oboe:* Libby Quarrier. *Clarinet:* Konrad Owens, Steven Jonas. *Horn:* Robert Jones. *Trumpet:* Craig Hodgetts, Roger Thorpe. *Trombone:* Smith Brittingham, Gil McKelvie. *Percussion:* Sandra Guisler. *Harp:* Sally Baxter.

PRODUCTION STAFF

<i>Assistant Producer</i>	HARRY A. DAWE
<i>Business Manager</i>	JACK STELLMAN
<i>Publicity Director</i>	SUSAN TOUSCHARD
<i>Tickets</i>	MRS. W. HAYDEN BOYERS
<i>Falmouth Representative</i>	MR. MYRON GADDIS
<i>Associate Conductor</i>	RAYMOND DONNELL
<i>Orchestra Manager</i>	SMITH BRITTINGHAM
<i>Set Designer</i>	ELIZABETH WHITSON
<i>Choreographer</i>	ELIZABETH MINOT
<i>Assistant to Director</i>	FRANK PORATH
<i>Technical Director</i>	CRAIG HODGETTS
<i>Lighting</i>	FRANK PORATH
<i>House Electricians</i>	TIM MAYER
<i>Stage Manager</i>	KONRAD OWENS
<i>Stage Crew</i>	RICHARD THAYER
	DICK FIRMIN
	ROBERT O'BRIEN
	JOANI BLANK
<i>Costumes</i>	JUDY WILLIAMS
	SUSAN CLARK
<i>Make-up</i>	SUSAN WOODRUFF
<i>Properties</i>	MARLENE ROBERTS
<i>Chorus Assistant</i>	ANN MENSENDIEK
<i>Accompanist</i>	SIEG SCHOENBOHM

USHERS AND USHERETTES

Susan Braden, Stephen Bray, Carolyn Carey, Dorothy Cotton, Harry Crooks, Arden Edwards, Joanne Hall, Valerie Hampton, Carlotta Hayes, Carol Jacoby, Jean Jenkins, Jane Langenheim, Michael Lesh, Jean McGilvary, Susan McGilvary, Muriel Minot, Penny Regan, Carol Louise Rose, Carol Soderland, Sandra Struth.

DAVID QUINN**Electrical Contractor****Power Oil Burner Service**

94 Gifford St.

KI 8-0368

PAFFORD'S**BOWLING CENTER****The newest and most modern****Bowling Center in****Southeast Massachusetts****Opening in August**

Falmouth Center — Ample Parking

James M. Pafford**Realtor**

KImball 8-1034

"Hansel and Gretel"

CAST

(in order of appearance)

GRETEL	Susan Stone
HANSEL	Jean Anne Teal
MOTHER	Ellen Miller
FATHER	John Crowe
SANDMAN	Carol Powers
DEW FAIRY	Carole Taynton
WITCH	Jean Taynton

SYNOPSIS OF SCENES

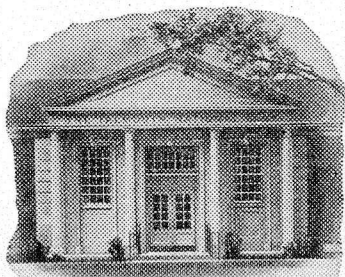
- ACT I. The Interior of Hansel and Gretel's Cottage.
 ACT II. The Black Forest (The Ilsenstein)
 ACT III. The Witch's House.

CHORUS

ANGELS AND CHILDREN: Susan Clark, Sally Cole, Kathy Cook, Roz King, Bonnie McBride, Helen Medwedeff, Ann Mensendiek, Betsy Minot, Muriel Minot, Aurea Natale, Vivian Schindler, Elizabeth Whitson, Judy Williams, Sue Woodruff.

DANCERS: Kathy Cook, Vivian Schindler.

CHORUS MASTER: Raymond Donnell



The Falmouth National Bank

Falmouth, Mass.

By the Village Green since 1821

Cape Cod's Oldest Bank

Branch Offices—Woods Hole - East Falmouth
Otis Air Force Base

Member Federal Deposit Insurance Corp.

**WOOD
LUMBER CO.**

Locust Street, Falmouth
Tel. KImbal 8-3154

**Millwork - Mason Materials
Paint - Hardware**

Manuel T. Medeiros

BUILDER

NORTH FALMOUTH

Call L0cust 3-6693

MEET THE CAST—Continued from Page 12

her sophomore year at Oberlin this fall, where she is majoring in history. During high school Carole participated in the productions of the Philadelphia Gilbert & Sullivan Players, and she sang with the Philadelphia Orchestra Chorus. Like Jean, Carole made her stage debut in HANSEL AND GRETEL, and she was very active in high school dramatic productions, including playing the role of Amahl in AMAHL AND THE NIGHT VISITORS. At Oberlin Carole has sung in CARMEN and in the Gilbert & Sullivan productions of PIRATES and PRINCESS IDA. Her roles with the Players this summer include Sally in DIE FLEDERMAUS and Cousin Hebe in H.M.S. PINAFORE. Carole plans a career in social work.

CAROL POWERS, the Sandman, from Landenberg, Pa., is spending her first sea-

son with the Players. Carol will be a sophomore at the Oberlin Conservatory, where she is majoring in music education. During high school Carol was very active in music and dramatics: she sang the role of Josephine in H.M.S. PINAFORE; she has participated in the semi-professional musicals given at Longwood Gardens. Carol received scholarships for music and acting from the community orchestra and from the theatre group of her home town. This year Carol was runner-up in the Miss Chester County competition—a contest based on beauty and talent. At Oberlin Carol has sung with the Gilbert & Sullivan organization and the Opera Lab; she also has done costumes and make-up. Carol's plans for the future are indefinite, although she is considering a theatrical career.

EXECUTIVE BOARD

W. HAYDEN BOYERS	<i>Producer</i>
HARRY A. DAWE	<i>Assistant Producer</i>
JACK STELLMAN	<i>Business Manager</i>
DR. ROBERTS RUGH	<i>Treasurer</i>
TOM SHEPARD	<i>Stage Director</i>
ROBERT B. KREIS	<i>Musical Director</i>
RAYMOND DONNELL	<i>Chorus Master</i>
SUSAN TOUSCHARD	<i>Publicity Director</i>
ELIZABETH WHITSON	<i>Set Designer</i>

ROBBIN'S
Package Store

DRIVE-IN

Beer - Wines - Liquors

Parking

KImball 8-1920

E. Main St. Falmouth

CHARLBET'S
STATIONERS

Gift Cards — Art Supplies

REMINGTON TYPEWRITERS
ADDING MACHINES

227 Main St Falmouth
337 Main St. Hyannis

Mariner Motor Inn

Main Street
KI 8-1331

Falmouth
Box 488

CALENDAR OF SPECIAL EVENTS

- | | | |
|---------------|------------------------------------|--|
| Mon. | July 14
8:30 P.M. | Pre-season performance of " The Pirates of Penzance ". Fourth annual scholarship benefit. Lawrence High School Memorial Auditorium. |
| Sun. | July 20
11 A.M. | Choral and Orchestral Music ; the Hyannis Federated Church. |
| Fri. | July 25
8:30 P.M. | " Die Fledermaus "
Benefit performance for the Woods Hole Child Center, Highfield. |
| Fri. | Aug. 1
8:30 P.M. | " H.M.S. Pinafore ". Benefit performance for the John Wesley Methodist Church; Highfield. |
| Sun. | Aug. 3
8:00 P.M. | Concert ; Benefit for the Organ Fund; St. Barnabas Church. |
| Fri. | Aug. 8
8:30 P.M. | " Hansel and Gretel " Benefit performance for the Falmouth Grange; Highfield. |
| Fri. | Aug. 15 | Bastien and Bastienne & Trial by Jury ; Benefit performance for the Cape Cod Association for the Advancement of Retarded Children; Highfield. |
| Thurs. | Aug. 21 | Princess Ida ; Benefit performance for the Falmouth Historical Society; Highfield. |

Also many individual appearances in Cape Cod Churches during the season.

We are very happy to be able to lend our services to the Community of Falmouth, and to be able to be of assistance to the various organizations who have chosen to call upon us. It is our policy to further, as much as possible, the opportunities offered us to present concerts and recitals throughout the Cape Cod area.

* * *

COFFEE ON OPENING NIGHTS

In keeping with traditional Highfield hospitality, friends are invited to have coffee and meet members of the company immediately after the opening night performance each week.

OBERLIN INN
AND MOTEL

IN
OBERLIN
OHIO

— When you're motoring—from West to East or East to West. . . it makes a delightful stop-over