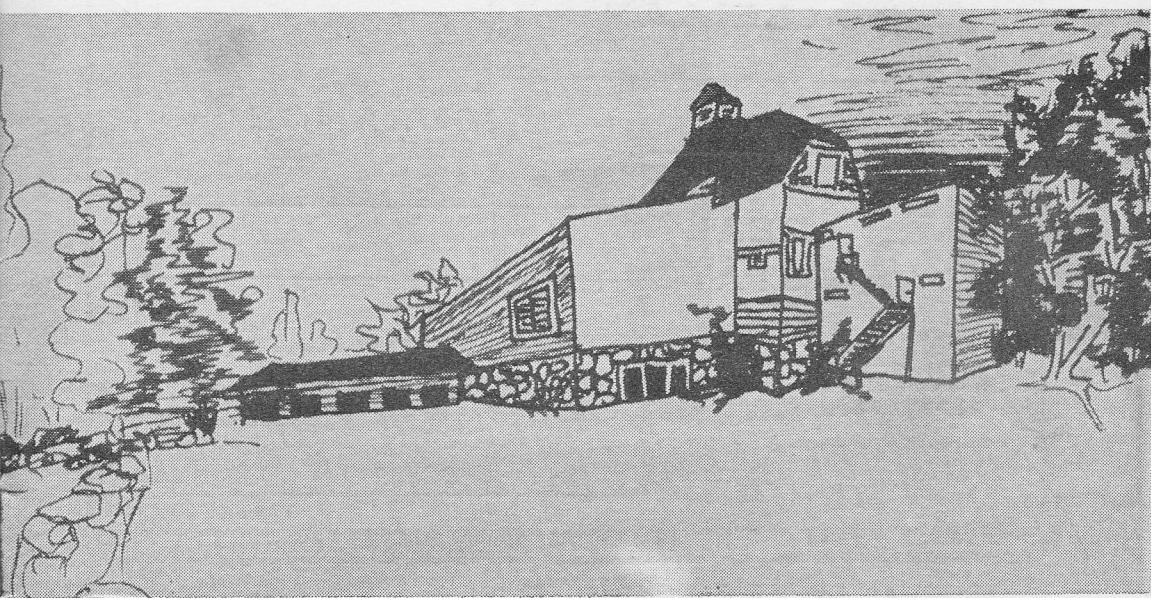


OBERLIN COLLEGE

GILBERT & SULLIVAN PLAYERS
HIGHFIELD THEATRE



“H. M. S. Pinafore”

July 29 - August 2 - 1958

OBERLIN COLLEGE
GILBERT and SULLIVAN PLAYERS

at

HIGHFIELD THEATER

present

"H. M. S. Pinafore"

by

W. S. GILBERT and ARTHUR S. SULLIVAN

Stage Director
TOM Z. SHEPARD

Producer
W. HAYDEN BOYERS

Musical Director
ROBERT B. KREIS

HIGHFIELD THEATER
Falmouth, Massachusetts

July 29 - August 2 - 1958

ALFRED SOARES

PLUMBING & HEATING

KI 8-2047

Falmouth

ORCHESTRA

First Violin: Jane Hannauer, Concertmistress; Brenton Crane, Roberta Buckingham. *Second Violin:* Kitty Gerson, Mary Evoy. *Viola:* Alan Lubin. *Cello:* Richard Serbagi. *Bass:* Kenneth Ross. *Flute:* Martha Duvall, Kathy Cook. *Oboe:* Libby Quarrier. *Clarinet:* Konrad Owens. *Horn:* Robert Jones. *Trumpet:* Craig Hodgetts, Roger Thorpe. *Trombone:* Smith Brittingham, Gil McKelvie. *Percussion:* Sandra Guisler.

PRODUCTION STAFF

<i>Assistant Producer</i>	HARRY A. DAWE
<i>Business Manager</i>	JACK STELLMAN
<i>Publicity Director</i>	SUSAN TOUSCHARD
<i>Tickets</i>	MRS. W. HAYDEN BOYERS
<i>Falmouth Representative</i>	MR. MYRON GADDIS
<i>Associate Conductor</i>	RAYMOND DONNELL
<i>Orchestra Manager</i>	SMITH BRITTINGHAM
<i>Set Designer</i>	ELIZABETH WHITSON
<i>Choreographer</i>	ELIZABETH MINOT
<i>Technical Director</i>	CRAIG HODGETTS
<i>Lighting</i>	FRANK PORATH
<i>House Electricians</i>	TIM MAYER
<i>Stage Manager</i>	KONRAD OWENS
<i>Stage Crew</i>	RICHARD THAYER
	DICK FIRMIN
	ROBERT O'BRIEN
	KATHY COOK
<i>Costumes</i>	JUDY WILLIAMS
	SUSAN CLARK
<i>Make-up</i>	SUSAN WOODRUFF
<i>Properties</i>	MARLENE ROBERTS
<i>Chorus Assistant</i>	ANN MENSENDIEK
<i>Accompanist</i>	DON TULL

USHERS AND USHERETTES

Susan Braden, Stephen Bray, Carolyn Carey, Dorothy Cotton, Harry Crooks, Arden Edwards, Joanne Hall, Valerie Hampton, Carlotta Hayes, Carol Jacoby, Jean Jenkins, Jane Langenheim, Michael Lesh, Jean McGilvary, Susan McGilvary, Muriel Minot, Penny Regan, Carol Louise Rose, Carol Soderland, Sandra Struth.

DAVID QUINN

Electrical Contractor

Power Oil Burner Service

94 Gifford St. KI 8-0368

PAFFORD'S

BOWLING CENTER

The newest and most modern

Bowling Center in

Southeast Massachusetts

Opening in August

Falmouth Center — Ample Parking

James M. Pafford Realtor

KI Imball 8-1034

"H. M. S. Pinafore"

CAST

(in order of appearance)

LITTLE BUTTERCUP	Ann Mensendiek
BOSUN	Harry Shaefer
CARPENTER'S MATE	George Hannauer
DICK DEADEYE	John Crowe
RALPH RACKSTRAW	Shelby Bale
CAPTAIN CORCORAN	John Roberts
SIR JOSEPH PORTER, K. C. B.	Franklin E. Porath
COUSIN HEBE	Carol Taynton
JOSEPHINE	Jean Anne Teal

SYNOPSIS OF SCENES

The H.M.S. Pinafore docked in Portsmouth

ACT I. Morning

ACT II. Evening

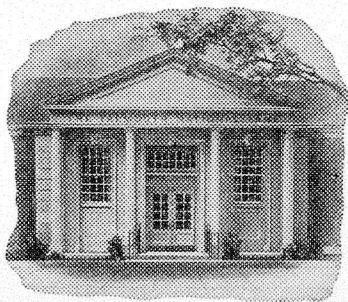
CHORUS

SAILORS: Jerome Blumenthal, Dave Cornell, Dick Firmin, John Patterson, Steven Jonas, Tim Mayer, Sieg Schoenbohm, Dick Sprigg, Tom Tibbetts.

SISTERS, COUSINS, AND AUNTS OF SIR JOSEPH PORTER: Joan Blank, Sally Cole, Sally Grove, Bonnie McBride, Helen Medwedeff, Ellen Miller, Aurea Natale, Carol Powers, Vivian Schindler, Jean Taynton.

MARINES: D. Thomas Tull, W. H. Boyers.

CHORUS MASTER: Raymond Donnell.



The Falmouth National Bank

Falmouth, Mass.

By the Village Green since 1821

Cape Cod's Oldest Bank

Branch Offices—Woods Hole - East Falmouth
Otis Air Force Base

Member Federal Deposit Insurance Corp.

All deposits insured up to \$10,000

**WOOD
LUMBER CO.**

Locust Street, Falmouth

Tel. KImbal 8-3154

Millwork - Mason Materials

Paint - Hardware

Manuel T. Medeiros

BUILDER

NORTH FALMOUTH

Call LOcust 3-6693

MEET THE CAST—Continued from Page 12

“Patience,” “Ruddigore,” “Iolanthe,” “Pin-afore,” and “Pirates of Penzance.” John graduated from Oberlin in 1955 with a B.A. in art history. This fall he will be at the University of Chicago, where he has a Laverne Noyes Scholarship for graduate study in archaeology and Hittite language. John’s wife, Marlene, is doing properties for the Players this season.

JOHN CROWE, Dick Deadeye, comes from Ohio and is with the Players for his second season as a lead. He finished one year at Oberlin and left to become an apprentice at the Cleveland Playhouse, where he played roles in “Inherit the Wind,” “Androcles,” and “Hangs Over Thy Head.” John also appeared in “Witness for the Prosecution” at the Weather-vane Playhouse in Akron, Ohio. At Oberlin he was a member of the renowned Oberlin College Choir, and he appeared

in Gilbert & Sullivan productions there. John wants to sing professionally in the theatre.

HARRY SHAEFER, the Bosun, is from Ypsilanti, Michigan, and is spending his first season with the Players. He sings in the chorus and also performs lead roles. While in high school, Harry played violin and percussion in the orchestra and won several oratory honors, among them the city championship of the “I Speak for Democracy” competition. In 1954 Harry attended the National Music Camp in Interlochen, where he sang the role of Pish Tish in a production of the **MIKADO**. Harry will be a sophomore at Oberlin, and he received scholastic honors there his freshman year. He sang in the G & S productions of “Pirates” and “Princess Ida.” Harry will major in one of the humanities and plans to teach.

EXECUTIVE BOARD

W. HAYDEN BOYERS	<i>Producer</i>
HARRY A. DAWE	<i>Assistant Producer</i>
JACK STELLMAN	<i>Business Manager</i>
DR. ROBERTS RUGH	<i>Treasurer</i>
TOM SHEPARD	<i>Stage Director</i>
ROBERT B. KREIS	<i>Musical Director</i>
RAYMOND DONNELL	<i>Chorus Master</i>
SUSAN TOUSCHARD	<i>Publicity Director</i>
ELIZABETH WHITSON	<i>Set Designer</i>

**ROBBIN'S
Package Store**

DRIVE-IN

Beer - Wines - Liquors

Parking

KImball 8-1920

E. Main St.

Falmouth

CHARLBET'S

STATIONERS

Gift Cards — Art Supplies
REMINGTON TYPEWRITERS
ADDING MACHINES

227 Main St

Falmouth

337 Main St.

Hyannis

Mariner Motor Inn

Main Street
KI 8-1331

Falmouth
Box 488

CALENDAR OF SPECIAL EVENTS

- | | | |
|--------|----------------------|--|
| Mon. | July 14
8:30 P.M. | Pre-season performance of "The Pirates of Penzance". Fourth annual scholarship benefit. Lawrence High School Memorial Auditorium. |
| Sun. | July 20
11 A.M. | Choral and Orchestral Music; the Hyannis Federated Church. |
| Fri. | July 25
8:30 P.M. | "Die Fledermaus"
Benefit performance for the Woods Hole Child Center, Highfield. |
| Fri. | Aug. 1
8:30 P.M. | "H.M.S. Pinafore". Benefit performance for the John Wesley Methodist Church; Highfield. |
| Sun. | Aug. 3
8:00 P.M. | Concert; Benefit for the Organ Fund; St. Barnabas Church. |
| Fri. | Aug. 8
8:30 P.M. | "Hansel and Gretel" Benefit performance for the Falmouth Grange; Highfield. |
| Fri. | Aug. 15 | Bastien and Bastienne & Trial by Jury; Benefit performance for the Cape Cod Association for the Advancement of Retarded Children; Highfield. |
| Thurs. | Aug. 21 | Princess Ida; Benefit performance for the Falmouth Historical Society; Highfield. |

Also many individual appearances in Cape Cod Churches during the season.

We are very happy to be able to lend our services to the Community of Falmouth, and to be able to be of assistance to the various organizations who have chosen to call upon us. It is our policy to further, as much as possible, the opportunities offered us to present concerts and recitals throughout the Cape Cod area.

* * *

COFFEE ON OPENING NIGHTS

In keeping with traditional Highfield hospitality, friends are invited to have coffee and meet members of the company immediately after the opening night performance each week.

OBERLIN INN
AND MOTEL

IN
OBERLIN
OHIO

— When you're motoring—from West to East or East to West... it makes a delightful stop-over