

# OBERLIN COLLEGE

GILBERT & SULLIVAN PLAYERS  
HIGHFIELD THEATRE

*“Die Fledermaus”*

JULY 22 — JULY 26

1958

OBERLIN COLLEGE  
GILBERT and SULLIVAN PLAYERS

at

HIGHFIELD THEATER

present

*“Die Fledermaus”*

by

JOHANN STRAUSS

Stage Director  
TOM Z. SHEPARD

Producer  
W. HAYDEN BOYERS

Musical Director  
ROBERT B. KREIS

HIGHFIELD THEATER  
Falmouth, Massachusetts

July 22 - July 26 - 1958

# ALFRED SOARES

PLUMBING & HEATING

KI 8-2047

Falmouth

## ORCHESTRA

*First Violin:* Alan Lubin, Concertmaster; Brenton Crane, Jane Hannauer. *Second Violin:* Roberta Buckingham, Mary Evoy. *Viola:* Kitty Gerson. *Bass:* Kenneth Ross. *Flute:* Sally Grove, Martha Duvall. *Oboe:* Libby Quarrier. *Clarinet:* Konrad Owens. *Horn:* Robert Jones. *Trumpet:* Craig Hodgetts, Roger Thorpe. *Trombone:* Smith Brittingham, Gil McKelvie. *Percussion:* Sandra Guisler. *Harp:* Sally Baxter.

## PRODUCTION STAFF

<i>Assistant Producer</i> .....	HARRY A. DAWE
<i>Business Manager</i> .....	JACK STELLMAN
<i>Publicity Director</i> .....	SUSAN TOUSCHARD
<i>Tickets</i> .....	MRS. W. HAYDEN BOYERS
<i>Falmouth Representative</i> .....	MR. MYRON GADDIS
<i>Associate Conductor</i> .....	RAYMOND DONNELL
<i>Orchestra Manager</i> .....	SMITH BRITTINGHAM
<i>Set Designer</i> .....	ELIZABETH WHITSON
<i>Choreographers</i> .....	ELIZABETH MINOT SIEG SCHOENBOHM
<i>Technical Director</i> .....	CRAIG HODGETTS
<i>Lighting</i> .....	FRANK PORATH
<i>House Electricians</i> .....	TIM MAYER KONRAD OWENS
<i>Stage Manager</i> .....	RICHARD THAYER
<i>Stage Crew</i> .....	MURIEL MINOT
<i>Stage Crew</i> .....	DICK FIRMIN ROBERT O'BRIEN
<i>Costumes</i> .....	JUDY WILLIAMS SUSAN CLARK
<i>Make-up</i> .....	SUSAN WOODRUFF
<i>Properties</i> .....	MARLENE ROBERTS
<i>Chorus Assistant</i> .....	ANN MENSENDIEK
<i>Accompanist</i> .....	SIEG SCHOENBOHM

## USHERS AND USHERETTES

Susan Braden, Stephen Bray, Carolyn Carey, Dorothy Cotton, Harry Crooks, Arden Edwards, Joanne Hall, Valerie Hampton, Carlotta Hayes, Carol Jacoby, Jean Jenkins, Jane Langenheim, Michael Lesh, Jean McGilvary, Susan McGilvary, Muriel Minor, Penny Regan, Carol Louise Rose, Carol Soderland, Sandra Struth.

## DAVID QUINN

Electrical Contractor

Power Oil Burner Service

94 Gifford St.      KI 8-0368

## PAFFORD'S

**BOWLING CENTER**

The newest and most modern

Bowling Center in

Southeast Massachusetts

Opening in August

Falmouth Center — Ample Parking

James M. Pafford      Realtor

KImball 8-1034

# “Die Fledermaus”

## CAST

(in order of appearance)

ADELE .....	Susan Stone
ROSALINDA .....	Jean Anne Teal
ALFRED .....	John Roberts
DR. BLIND .....	Harry Shaefer
GABRIEL EISENSTEIN .....	Shelby Bale
DR. FALKE .....	John Crowe
FRANK, THE WARDEN .....	John Patterson
PRINCE ORLOFSKY .....	D. Thomas Tull
SALLY .....	Carol Taynton
IVAN, THE BUTLER .....	Tim Mayer
FROSCH, THE JAILER .....	Franklin E. Porath

## SYNOPSIS OF SCENES

ACT I. Second floor of Eisenstein's summer villa in the suburbs of Vienna.

FIVE MINUTE INTERMISSION

ACT II. The ballroom of Prince Orlofsky's villa.

FULL INTERMISSION

ACT III. The office of the Prison Warden.

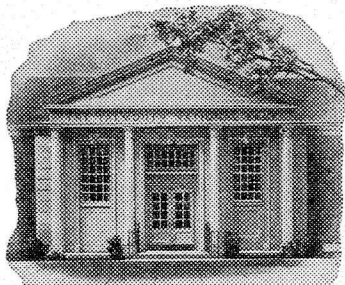
## CHORUS

Sally Cole, Kathy Cook, Bonnie McBride, Helen Medwedeff, Ann Mensendiek, Ellen Miller, Elizabeth Minot, Muriel Minot, Aurea Natale, Carol Powers, Vivian Schindler, Jean Taynton, Susan Touschard.

Jerome Blumenthal, Fred Clark, Dave Cornell, Harry Dawe, Dick Firmin, George Hanauer, Steven Jonas, Sieg Schoenbohm, Dick Sprigg, Tom Tibbetts.

CZARDAS DANCERS: Kathy Cook, Elizabeth Minot, Sieg Schoenbohm, Jack Stellman.

CHORUS MASTER: Raymond Donnell.



## The Falmouth National Bank

Falmouth, Mass.

By the Village Green since 1821

Cape Cod's Oldest Bank

Branch Offices—Woods Hole - East Falmouth  
Otis Air Force Base

Member Federal Deposit Insurance Corp.

All deposits insured up to \$10,000

## Manuel T. Medeiros

**BUILDER**

NORTH FALMOUTH

Call LOcust 3-6693

## WOOD LUMBER CO.

Locust Street, Falmouth

Tel. KImbal 8-3154

**Millwork - Mason Materials**

**Paint - Hardware**

### MEET THE CAST—Continued from Page 12

1954 and 1955, he sang baritone leads in "Yeomen of the Guard," "Trial by Jury," "Patience," "Ruddigore," "Iolanthe," "Pinafore," and "Pirates of Penzance." John graduated from Oberlin in 1955 with a B.A. in art history. This fall he will be at the University of Chicago, where he has a Laverne Noyes Scholarship for graduate study in archaeology and Hittite language. John's wife, Marlene, is doing properties for the Players this season.

**JOHN CROWE**, Dr. Falke, comes from Ohio and is with the Players for his second season as a lead. He finished one year at Oberlin and left to become an apprentice at the Cleveland Playhouse, where he played roles in "Inherit the Wind," "Androcles," and "Hangs Over Thy Head." John also appeared in "Witness for the Prosecution" at the Weather-

vane Playhouse in Akron, Ohio. At Oberlin he was a member of the renowned Oberlin College Choir, and he appeared in Gilbert & Sullivan productions there. John wants to sing professionally in the theatre.

**JOHN PATTERSON**, Frank the Warden, is from Ithaca, N. Y., and is with the Players for his first summer to sing tenor roles. John will be a junior at Oberlin where he is majoring in government. At Oberlin he has sung in the chorus for the Gilbert & Sullivan Players, and he sang the role of CYRIL in "Princess Ida." He was co-author with Sieg Schoenbohm, also a member of the company this season, of an original play, "Cry, Children, Cry," produced on the campus. John wants to become a journalist.

### EXECUTIVE BOARD

W. HAYDEN BOYERS .....	<i>Producer</i>
HARRY A. DAWE .....	<i>Assistant Producer</i>
JACK STELLMAN .....	<i>Business Manager</i>
DR. ROBERTS RUGH .....	<i>Treasurer</i>
TOM SHEPARD .....	<i>Stage Director</i>
ROBERT B. KREIS .....	<i>Musical Director</i>
RAYMOND DONNELL .....	<i>Chorus Master</i>
SUSAN TOUSCHARD .....	<i>Publicity Director</i>
ELIZABETH WHITSON .....	<i>Set Designer</i>

## ROBBIN'S Package Store

**DRIVE-IN**

**Beer - Wines - Liquors**

**Parking**

KImball 8-1920

E. Main St. Falmouth

## CHARLBET'S STATIONERS

Gift Cards — Art Supplies  
REMINGTON TYPEWRITERS  
ADDING MACHINES

227 Main St Falmouth  
337 Main St. Hyannis

Main Street  
KI 8-1331

*Mariner Motor Inn*

Falmouth  
Box 488

### CALENDAR OF SPECIAL EVENTS

- Mon. July 14** 8:30 P.M. Pre-season performance of "The Pirates of Penzance". Fourth annual scholarship benefit. Lawrence High School Memorial Auditorium.
- Sun. July 20** 11 A.M. Choral and Orchestral Music; the Hyannis Federated Church.
- Fri. July 25** 8:30 P.M. "Die Fledermaus" Benefit performance for the Woods Hole Child Center, Highfield.
- Fri. Aug. 1** 8:30 P.M. "H.M.S. Pinafore". Benefit performance for the John Wesley Methodist Church; Highfield.
- Sun. Aug. 3** 8:00 P.M. Concert; Benefit for the Organ Fund; St. Barnabas Church.
- Thurs. Aug. 7** 4:30-5:30 P.M. Music on the Village Green; Nurses' Fete.
- Fri. Aug. 8** 8:30 P.M. "Hansel and Gretel" Benefit performance for the Falmouth Grange; Highfield.
- Fri. Aug. 15** Bastien and Bastienne & Trial by Jury; Benefit performance for the Cape Cod Association for the Advancement of Retarded Children; Highfield.
- Thurs. Aug. 21** Princess Ida; Benefit performance for the Falmouth Historical Society; Highfield.

Also many individual appearances in Cape Cod Churches during the season.

We are very happy to be able to lend our services to the Community of Falmouth, and to be able to be of assistance to the various organizations who have chosen to call upon us. It is our policy to further, as much as possible, the opportunities offered us to present concerts and recitals throughout the Cape Cod area.

\* \* \*

#### COFFEE ON OPENING NIGHTS

In keeping with traditional Highfield hospitality, friends are invited to have coffee and meet members of the company immediately after the opening night performance each week.

**OBERLIN INN  
AND MOTEL**

**IN  
OBERLIN  
OHIO**

— When you're motoring—from West to East or East to West... it makes a delightful stop-over